

CTL LOGISTICS INDIA PVT LTD

your gateway to world ports...



MEMBER OF CHARTERLINK
LOGISTICS GROUP



Welcome to

CTL World...

A Journey Of 22 years and adding...

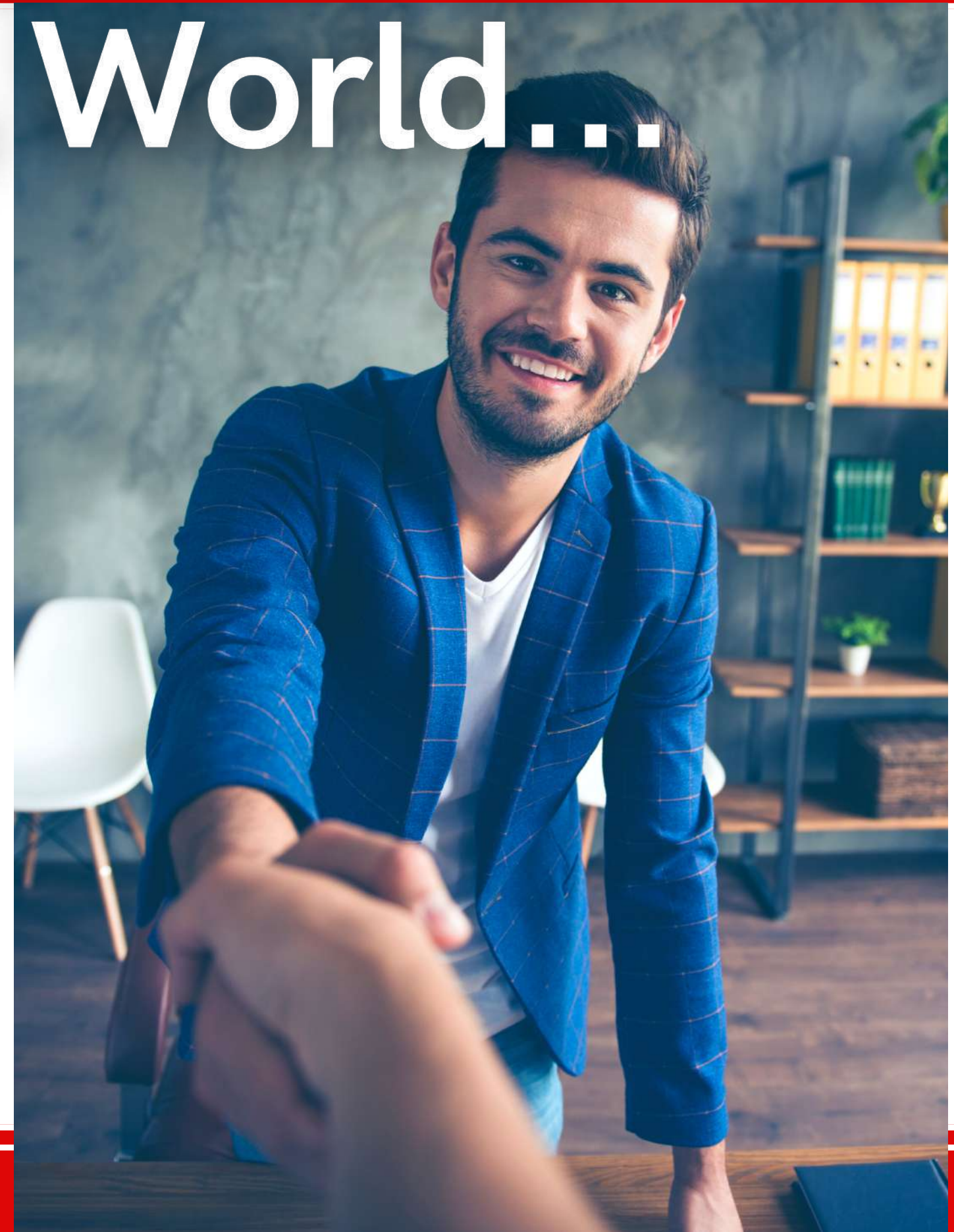
CTL Logistics (India) Pvt. Ltd. is a Member of Charter Link Logistics Group HongKong.

Armed with over 15+ offices in India, 17 offices in China, and 11 overseas offices and partnerships with over 200 overseas agents, CTL is one of the leading integrated logistics companies with the total organization strength of over 1300 team members.

CTL is involved in LCL Consolidation & Freight Forwarding activities at all its locations. We execute to develop a deep understanding of our client's businesses and partner with them by offering end-to-end logistics, warehousing and distribution solutions.

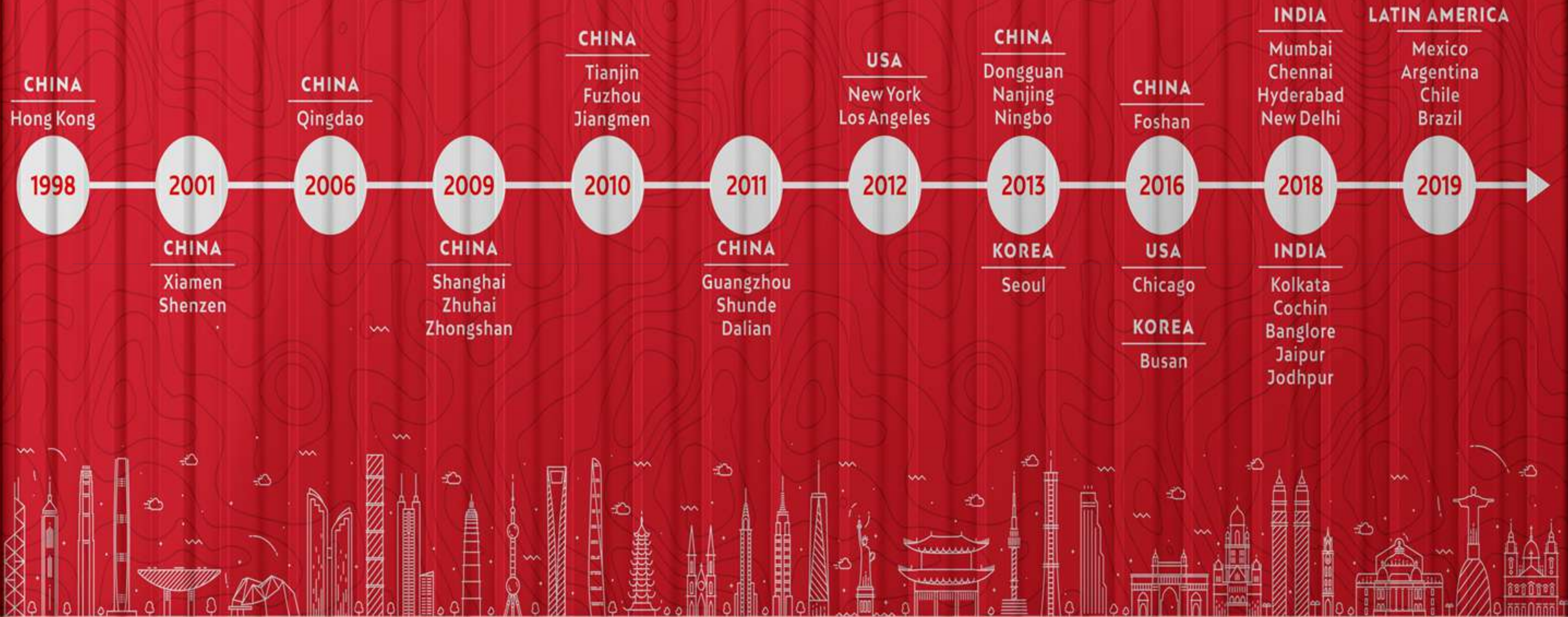
Armed with our experienced team and comprehensive network coverage, we promise our clients the most optimal routing with minimal cost and transit time for their shipments.

CTL is your one-stop-shop for your logistics needs.



The Company Story

A timeline of our company history



The **Management**

Mr. Rajat Chakraborty

As the Managing Director of this firm with an experience totaling 25 years in Consolidation & freight forwarding business, stands as the guiding star of this establishment. He has worked extensively in the North & Western parts of India, initially in the capacity of a Regional Head and later as part of the Company Board for many years.

From **Management Desk**

"Our value system is our backbone"

CTL stands for its unique value system, imbibing truth, honesty, and fair play in everything that we do. This has helped us gain the trust of our clients, as our services are integrated into their businesses and we function as an external partner for their internal processes. As an organization, our values and morals have been the guiding light for our actions. Starting off with LCL CONSOLIDATION, we have swiftly moved across domains, geographies, and industries to offer a gamut of services for the EXIM TRADE .

Furthermore, our sustained growth has been fuelled by the undying passion of our people and their willingness to succeed. An organization grows only if it empowers its team and gives them space to evolve into effective leaders. Our dedicated staff members are our key elements of success and none of the milestones would have been possible without immense contribution and dedication on their part.

I would like to conclude by saying, that we are staunch believers in long term relationships. Be it with our clients, employees, business partners, and our investors. We want our clients to benefit from the solutions we have to offer. We want our business partners, especially our CUSTOMERS , to grow with us as we do.

- Mr. Rajat Chakraborty

Vision

To be the most preferred Logistics Service provider in India, by providing innovative and quality supply chain solutions to our customers focusing on exponential growth value to our stakeholders.

Customers are the life line for any business and we constantly work towards strengthening our customer relationships and developing newer ones.

To emerge as a leading logistics by providing integrated supply chain solutions customised to client needs and aimed at fulfilling complex distribution requirements.

To keep a steady focus on safety, dependability and quality service to clients.

To become more competitive - by optimizing distribution cost effective inventory management and executing deliverables.

Always remain open for new business horizons in SCM

To provide our team with adequate growth opportunities

Mission

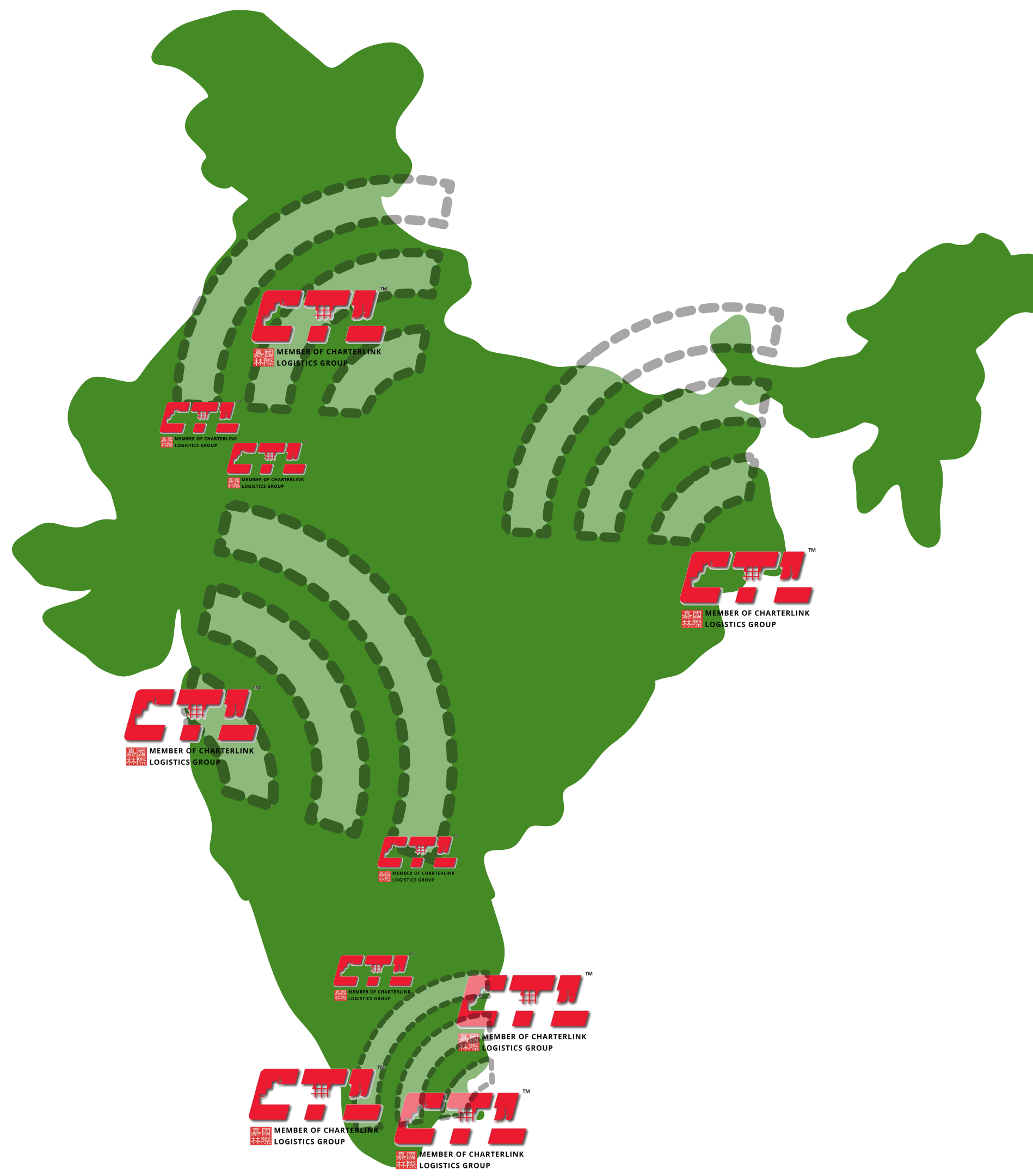
Corporate Team

We take immense pride in our corporate team which is comprised of professionals with diverse functional skills in areas like LCL Consolidation, International Trade, Warehousing, Human Resources, Logistics and Supply Chain Management, and Government Services.

Our senior management is boasts of highly experienced professionals possessing the precise mix of industry knowledge, experience, and pragmatism.

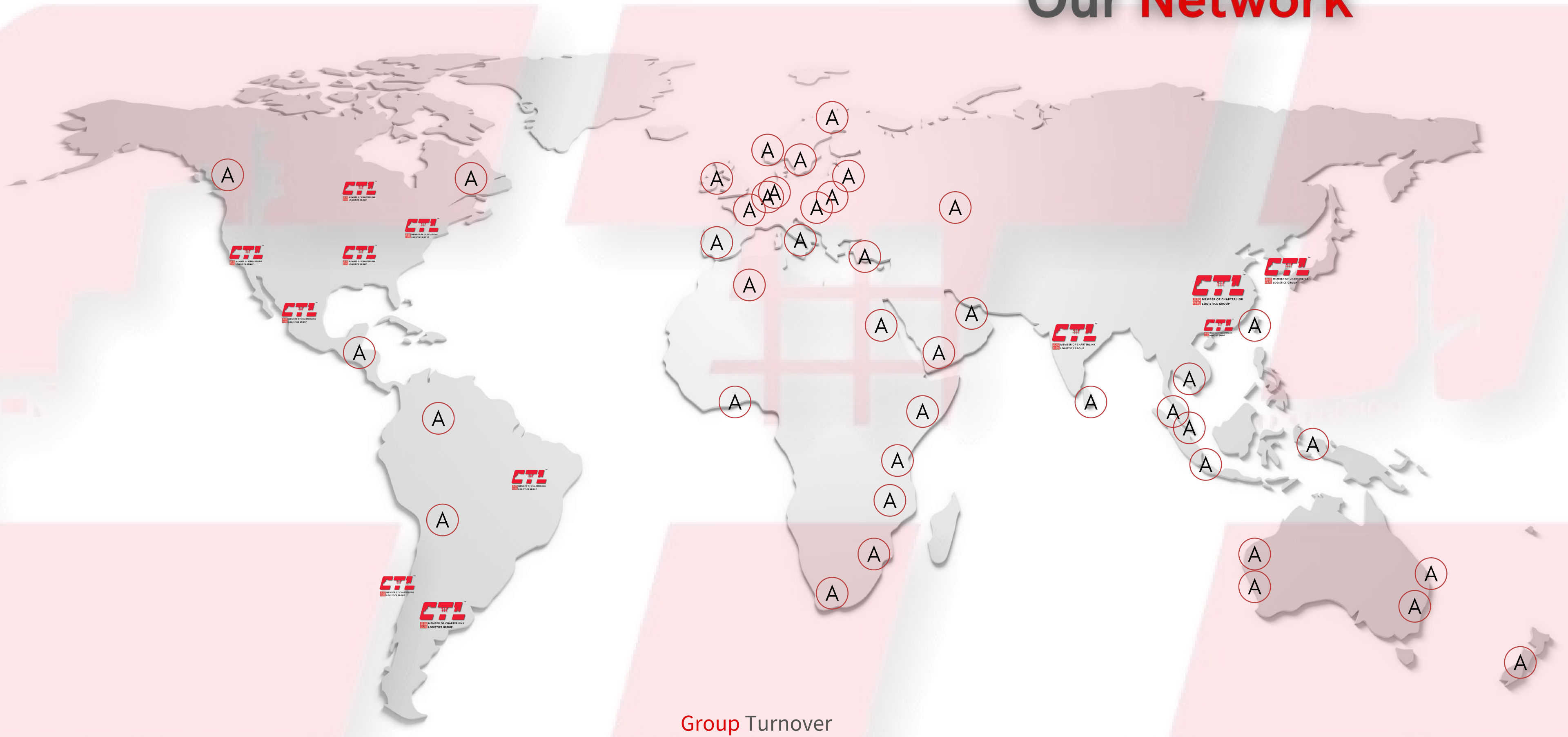
Our team's drive, dynamism, out-of-the-box thinking, and their ease with modern advancements have been at the forefront of our successes. With a highly energetic and talented team, we are never short of innovative ideas and are well-positioned to set the highest benchmarks for customer satisfaction.

Branches & Coverage



- Mumbai
- New Delhi
- Chennai
- Kolkata
- Cochin
- Bangalore
- Hyderabad
- Jaipur
- Jodhpur
- Coimbatore
- Tiruppur
- Mundra
- Ahmedabad
- Pune
- Mangalore
- Moradabad
- Ludhiana
- Indore
- Kathmandu
- Thimpu

Our Network



50 Direct Offices

Group Turnover
US\$400 Million

200 Agency Offices

Our Services...

LCL
CONSOLIDATION

FCL

BREAK
BULK

PROJECT

WAREHOUSING

PALLETIZING

TRANSPORTATION

FUMIGATION

HAZARDOUS

INSURANCE

LCL Consolidation & Freight Forwarding

Many large, as well as small exporters and importers often have cargo that is not enough to fill an entire container. To meet their requirements of shipping, we offer Less than Container Load Consolidation (LCL) service. With a strong focus on offering direct services to various locations, We have successfully provided the customers with the advantages of reduced transit time, reduced handling of cargo, and higher cost efficiencies.

Our leadership position in LCL consolidation and the large volumes of containerized cargo handled has enabled us to offer cost-effective FCL forwarding solutions to our customers as well. Value-added services such as ex-works pick-up and door delivery at the destination, duty paid deliveries in various countries, and a strong IT systems based information tracking has led Charter Link Logistics' to cultivate its presence in this segment of the logistics business.

We well-understand the shipping needs of India importers who require LCL & FCL shipments handling. This understanding has been a key factor in their business success. Over the years we have achieved the competence to provide specialist services with the ongoing addition of new features to enable our esteemed clients to maintain a competitive edge.

Today, our clients enjoy efficiency and cost-effectiveness in their import shipments essentially due to the vast network of agencies worldwide and the huge volumes.



Project Cargo

We at Charter Link Logistics (CTL) are fully geared to handle all types of heavy lift and over-dimensions. Irrespective of the port of origin and final destination, we will find an efficient solution for your transportation needs. The robust international networks of our own offices and partners share the same passion and expertise to provide a high standard of service and competitiveness.

Thus, we can undertake projects involving the relocation of entire plants along with machinery and equipment at the supplier's site and forwarding the same to India, as break-bulk cargo.

With our vast experience in the shipping and clearing field, we provide specialized shipping service to expedite international movements of Heavy Lift / Over-dimensional and Project cargo.



With years of experience in the freight industry, CTL Logistics are known for offering reliable and efficient air-freight forwarding service throughout the world. With an excellent network of operators who are available 24 hours a day and seven days a week, we promise a timely and cost effective delivery of goods to the desired destination.

CTL Logistics global airline partnerships are proud to offer excellent Air Freight Forwarding services at rather reasonable costs, fixed allocations and lift capacity of carriers in each major trade lane and their ability to add efficiency to our clients' supply chain management. In Air Cargo Transportation, we understand that timeliness and punctuality are essential. In order to offer clients the best service possible, our air cargo staffs maintain close relationship with all airlines operating in India.

Air Freight



Our Departments

Hazardous Cargo

The term **"HAZARDOUS"** calls to mind safety norms to be observed in handling. We take pride in calling ourselves the veterans in handling the hazardous cargo taking every precaution to protect the people and the marine environment.

CTL has a strong commitment to principles of safety, health, and environmental protection in the storage, transportation and delivery of dangerous goods. Strict controls are in place to ensure that these cargoes are handled safely.

We specialize in handling the issuance of dangerous goods declaration, classification, packing, re-packing, labelling, and transport.

Our dedicated team is well trained and is one that stays abreast with all the latest developments in technology and regulation to conform to the safe transport of your hazardous cargo by surface, sea, or air.

Logistics Solutions

As **business requirements** have shifted, the need for higher efficiency and more economical logistics has increased.

CTL continues to modernize its existing warehouse and distribution facilities to better serve its clients in terms of Warehouse Management, Inventory Control and Order Fulfilment.

We serve as a single-source logistics window for all products or components moving through your supply chain. Our Door To Door (DTD) program takes care of the entire Logistics process.

Each shipment will be picked up from the shipper at Origin and delivered to Door here in India and vice versa .

Warehousing

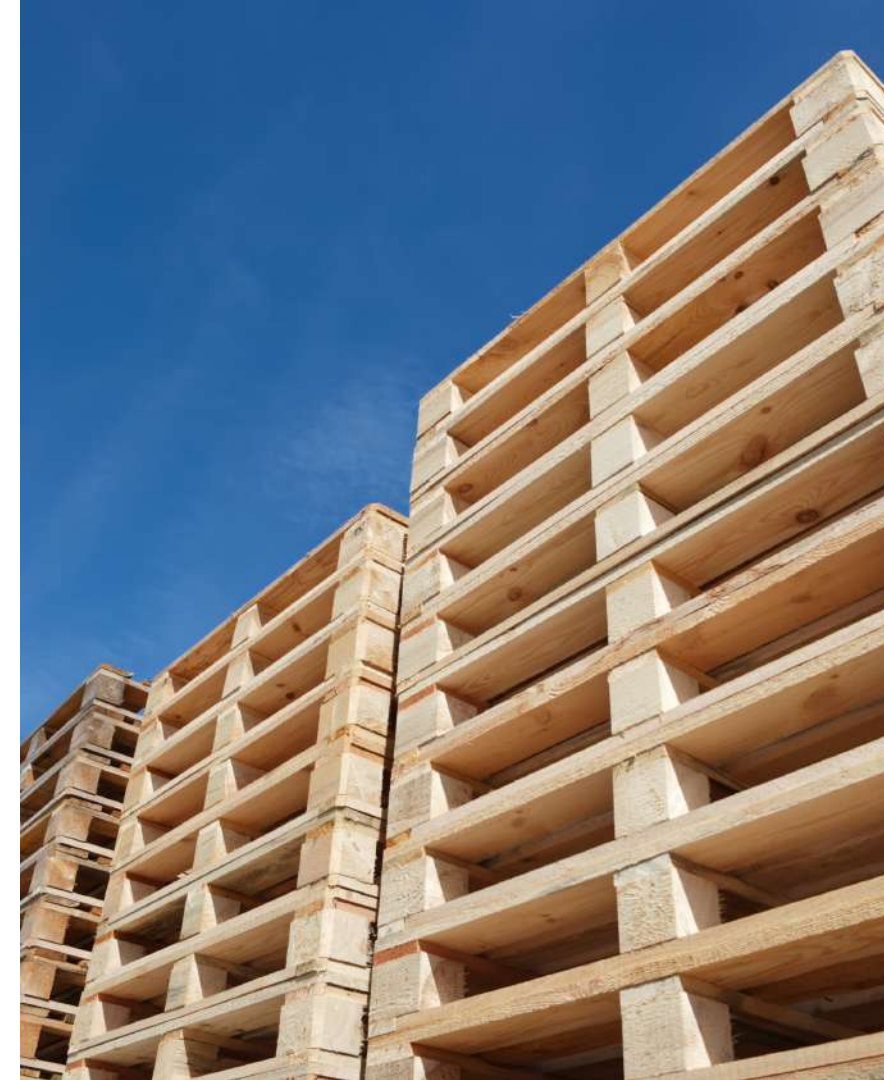
Charter Link Logistics (CTL) has liaised with some of the notable Container Freight Station solutions providers in key locations across the country to help enable our clients to reduce their overheads, increase efficiency, and cut down valuable management time.

We as warehousing partners provide high-level professional warehousing services and assure the safe arrival of your product anywhere, anytime.



EXHIBITION

We assist corporates that are participating in exhibitions abroad in transporting their marketing material to the venue of the event. Conversely, we also help foreign companies that are taking part in exhibitions held in India to bring their equipment to the event venue in a hassle-free manner.



PALLETIZATION

Our portfolio of value-added services includes palletization of export consignments. The palletization services are designed for safe loading and unloading of products. It also involves fumigation of the pallets for pest control, preventing the shipment from possible damages. We make sure that the base of the pallets is accessible for pallet-jacks on two sides with minimum clearance, allowing easy handling during loading and unloading of the goods

MULTIMODAL TRANSPORTATION

We are often seen as a shipping company, but that's just part of the picture. Multimodal Transport service at CTL is an effective chain that interconnects different links/ modes of transport - air, sea, and land into one complete process and ensures an efficient and cost-effective door-to-door movement of goods.



CARGO INSURANCE

We know the importance and value of the shipments we are handling; this is why we have contracted the best insurance policy to cover our clients' cargo upon their request against any transport risk. This cargo insurance represents an essential added value to complete our service cycle.





CTL LOGISTICS INDIA PVT LTD

Corporate Office

BSEL Tech Park, C-912

Plot No.39/5 & 39/5A, Sector - 30A

Vashi, Navi Mumbai - 400 705

Tel : +91 22 4977 0000 / 0001

Email : admin@charterlink.co.in

Visit Our Website for more details.

www.charterlink.co.in

- Thank You -